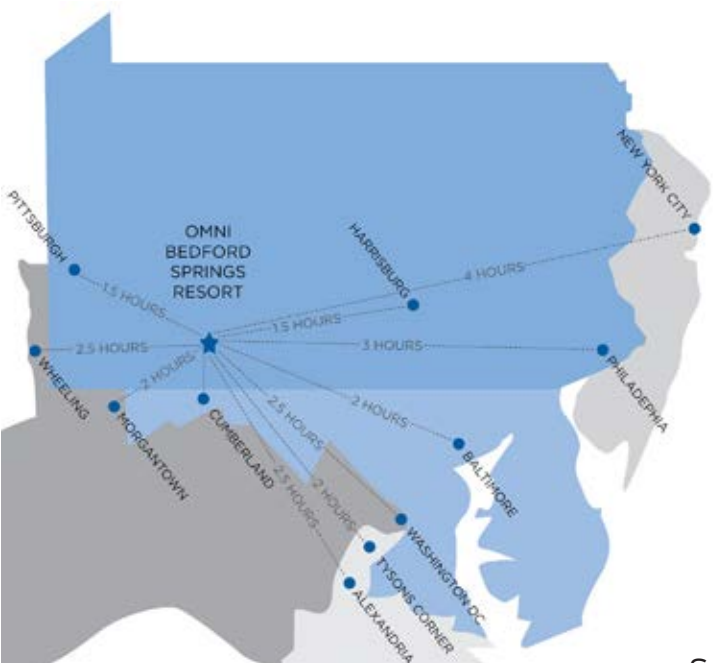


# 2020 2021

## Buyer's Guide



# EXCEPTIONAL EXPERIENCES



Allow us to make your meeting planning easy. Omni Bedford Springs Resort has been an important meeting place for more than 225 years. Today our magnificently renovated resort continues this heritage as a unique historic venue boasting more than 20,000 sq. feet of up-to-date meeting space. At Omni, we know there is magic in the details so we take ownership of planning your meeting with you. Our distraction-free atmosphere makes for a memorable retreat. Your attendees will feel inspired and rejuvenated.

The ultimate meeting retreat should earn rewards. Omni Select Planner is the newest way to earn in the Select Guest® loyalty program. Select Planner offers free nights faster through booking events and for stays – all in one Select Guest member account.

## SELECT GUEST

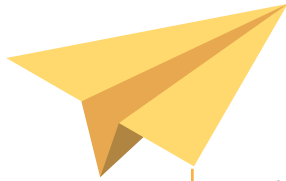


FOR SPECIAL PRICING & GROUP OFFERS,  
PLEASE CALL OUR SALES OFFICE AT (814) 624-5616.

OMNI  RESORTS  
bedford springs | pennsylvania  
[OmniHotels.com/Bedford](http://OmniHotels.com/Bedford)

# 2020-21

## Contents



About PASAE **5**

Presidents' Message **7**

Business Members **11**



*PASAE is proud of each of our member organizations. The newly released Buyer's Guide is meant to serve as resource to showcase your individual organizational offerings. We are excited to highlight each of you and thank you for your continued dedication and commitment to PASAE."*

—Randy Byler, CMP, 2020 Business Partner Advisory Group Chair



**HERSHEY<sup>®</sup>**  
**RESORTS**  
THE HOTEL HERSHEY<sup>™</sup> & HERSHEY LODGE<sup>™</sup>

# RAISING THE BAR

on *Meetings*

**HersheyMeetings.com**



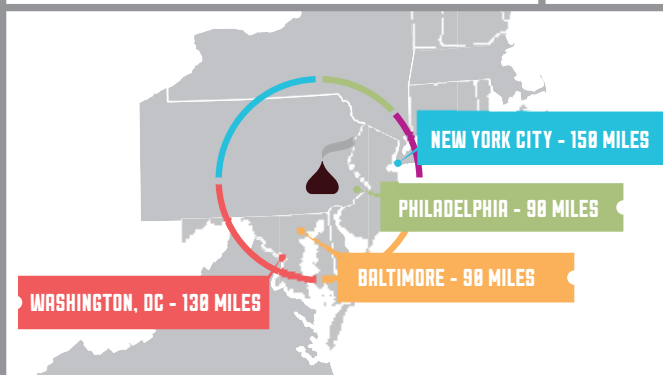
ALL ROADS LEAD TO HERSHEY



THE HOTEL HERSHEY<sup>®</sup>



HERSHEY LODGE<sup>SM</sup>



How does *Hershey Resorts<sup>SM</sup>* raise the bar? For starters, we combined the most convenient Mid-Atlantic location in the Northeast with 2 award-winning properties, sweet hospitality, and plenty of chocolate. And that's just the beginning, ask how your meeting at *Hershey Resorts* helps provide life-changing opportunities at *Milton Hershey School<sup>®</sup>*. Get started at [HersheyMeetings.com](http://HersheyMeetings.com) or by calling 1-866-PA MEETS.



CONVENIENT  
MID-ATLANTIC  
LOCATION

**125K** SQ. FT OF  
FLEXIBLE  
MEETING  
SPACE

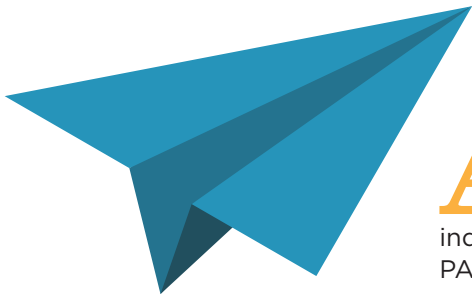
**941** DELUXE  
GUEST  
ROOMS



UNLIMITED  
CHOCOLATE

# about

## PASAE



**A**ssociations exist to further a particular profession and the interests of individuals engaged in that profession. They are also an integral part of protecting consumers by establishing industry ethics and standards for product safety and performance. PASAE exists to educate the individuals who are managing associations.

Association management is a complex and sometimes challenging profession, and PASAE is where association professionals at all levels come to meet their personal and professional needs.

PASAE provides the highest quality educational, leadership, and professional development opportunities to association executives and staff, as well as supplier members, which enhances the performance of the organizations they represent.

With many education programs and events throughout the year, we'll help you:

- Learn and exchange ideas
- Access resources and tools
- Develop valued relationships
- Advance in the association industry

At PASAE, association professionals and supporters drive their future through relationships and increasing knowledge in a supportive, professional community.

[PASAE's leadership](#) is comprised of your peers and industry professionals working on your behalf to bring you opportunities, resources and information that will further your work within your individual organizations and communities.

There are also opportunities for all members, both association and business suppliers, to participate in development, training, and education strategic planning discussions to help inform the direction of the association and to ensure PASAE continues to meet the needs of the members. Become involved in any one of [PASAE's committees or task forces](#).

Continuing education and networking opportunities, both in-person and virtually, are also available through your PASAE membership. Visit the [calendar of events](#) to see the plethora of opportunities available for you to continue your professional development pursuits.





Share your story.  
Engage your audience.

JP Lilley provides a seamless integration of technology to facilitate participation between live and virtual audience. Putting your online and live audience on the same level. Increase your reach and attendance today!



717.238.8123

JPLILLEY.COM

Greetings,

We are pleased to share PASAE's Buyer's Guide, which places subject matter experts right at your fingertips. This tool provides access to the amazing talent and opportunities available through PASAE membership within the Pennsylvania association community.

Serving as a reference, the Buyer's Guide underscores the importance of collaboration and connection amongst our members and the individual communities, we all serve throughout Pennsylvania. You may recall the previous Resource Guide which highlighted each of our member organizations. We have taken that guide and enhanced it, with input from the Business Partner Committee, creating this digital Buyer's Guide.

It truly takes a village to manage and run an effective association. PASAE will continue to provide you with the tools and programs you need to be successful with each of your individual organizations.

Thank you for all you do to promote association excellence.

Sincerely,



Johanna Byrd, ACSW, CAE, IOM  
2021 PASAE Chair

A handwritten signature in black ink that reads "Johanna Byrd".



Jan Reisinger, MBA, CAE  
2020 PASAE Chair

A handwritten signature in black ink that reads "Jan Reisinger".





## ABOVE AND BEYOND EXPECTATIONS

Kalahari Resorts & Conventions is known for going above and beyond, delivering unbelievable service and premium amenities. And now, they've expanded the event and meeting space in Pocono Mountains, Pennsylvania. The 205,000-square-foot space features 33 meeting rooms, three breathtaking ballrooms, magnificent prefunction spaces, additional load-in and load-out capabilities, and extensive registration and client office spaces.

## FIRST-CLASS MEETING AMENITIES

The modular meeting spaces feature the stylish amenities Kalahari Resorts & Conventions is known for. In the state-of-the-art space, guests will find high-def monitors and projectors along with remarkable lighting and AV controls for colorful and sharp presentations. They'll have free access to high-speed Wi-Fi with capacity to increase to 10 GB or more with advance order, plus ergonomic chairs designed to keep attendees comfortable for up to 10 hours — an important factor in attendee satisfaction.



## ENDLESS ENTERTAINMENT & DINING

One thing meeting planners have always loved about the Kalahari Resorts & Conventions experience is that the meeting space, guestrooms and leisure activities are all under one roof. And that's not going to change as Kalahari Resorts & Conventions doubles in size. Guests have easy access to the world-class Spa Kalahari & Salon. They'll also love the enticing dining experiences, including Double Cut, Kalahari Resorts & Conventions' signature steakhouse experience; Mondo Sortino's Italian Kitchen and B-Lux Grill & Bar. Guests can visit Kalahari Fitness or explore a variety of entertainment options, including America's Largest Indoor Waterparks, which are always included with overnight stays!

## SECOND-TO-NONE TEAM

The people are another big reason meeting planners keep coming back to Kalahari Resorts & Conventions. When guests plan their meeting at Kalahari Resorts & Conventions, they'll get a dedicated and experienced team to assist them. The Kalahari Resorts & Conventions team will provide advice and ideas that help planners meet their meeting goals and objectives. From media and activity suggestions to catering and room layouts, Kalahari Resorts & Conventions' skilled team will take care of everything.

## SO CLOSE, AND A WORLD AWAY

The location in the Pocono Mountains makes Kalahari Resorts & Conventions an easy option for attendees. They're less than two hours away from New York, Philadelphia, Harrisburg, Scranton and Allentown. It's convenient for guests, but just far enough for them to feel like they're a world away.





## WE JUST EXPANDED YOUR EXCEPTIONAL EXPERIENCE

In 2019, Kalahari Resorts & Conventions expanded their first-class event venues. That means even more space, more amenities and more second-to-none service. With a luxurious spa, enticing on-site restaurants and newly expanded venues, your attendance-increasing event is sure to be even more incredible.

- › EXPANDED LATE 2019
- › DOUBLED IN SIZE: NOW 205,000 SQUARE FEET OF FLEXIBLE CONVENTION SPACE
- › 18 MORE MEETING ROOMS, FOR A TOTAL OF 33
- › ADDED A 38,000-SQUARE-FOOT BALLROOM



[KalahariMeetings.com](http://KalahariMeetings.com)

Call 855-411-4605  
to learn more

POCONO MOUNTAINS, PA

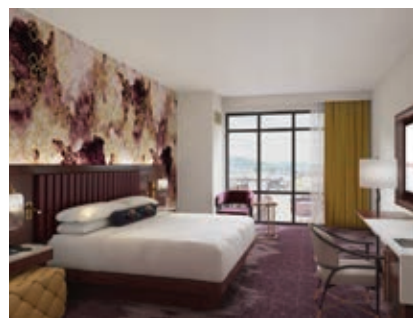
| ROUND ROCK, TX - 2020

| SANDUSKY, OH

| WISCONSIN DELLS, WI



# COMING 2022



Excitement is building at Wind Creek Bethlehem. Coming Late 2022, our integrated resort and AAA Four Diamond Hotel will grow to over 550 hotel rooms, 60,000 square feet of flexible event space including a 21,000 square foot ballroom, and added amenities of a rooftop pool and luxury spa.

To book your next meeting, call Dan Mies at 484.777.7928 or email at [Daniel.Mies@windcreek.com](mailto:Daniel.Mies@windcreek.com)

**[WindCreekBethlehem.com](http://WindCreekBethlehem.com)**



**WIND CREEK®**  
BETHLEHEM



# 2020-21

**Business Members**



**Pennsylvania's Laurel Highlands Visitors Bureau**

120 East Main St.  
Ligonier, PA 15658  
724-238-5661  
[www.laurelhighlands.org](http://www.laurelhighlands.org)



**POCONO MOUNTAINS**  
CONVENTION & VISITORS BUREAU

**Pocono Mountains Convention & Visitors Bureau ★**

1004 West Main St.  
Stroudsburg, PA 18360  
570-236-1699  
[www.poconos.org](http://www.poconos.org)  
The Pocono Mountains, a four-season destination perfectly suited for meetings and conventions. Offering over 6,000 committable lodging rooms and 500,000 sq. ft. of meeting space.

**Visit Bucks County**

3207 Street Rd.  
Bensalem, PA 19020  
215-639-0300  
[www.visitbuckscounty.com](http://www.visitbuckscounty.com)

**Visit Hershey & Harrisburg, Inc.**

3211 North Front St., Ste. 301-A  
Harrisburg, PA 17110  
717-231-2990  
[www.hersheyharrisburg.org](http://www.hersheyharrisburg.org)

**Visit Monroeville**

2790 Mossie Blvd, Ste. 150  
Monroeville, PA 15146  
[www.visitmonroeville.com](http://www.visitmonroeville.com)

**VisitErie**

208 E. Bayfront Pkwy, Ste. 103  
Erie, PA 16507  
814-454-7191  
[www.visiterie.com](http://www.visiterie.com)

**VisitMonroeville**

2790 Mossie Blvd, Ste. 150  
Monroeville, PA 15146  
412-856-7422  
[www.visitmonroeville.com](http://www.visitmonroeville.com)

**York County Convention & Visitors Bureau**

60 E. North St.  
York, PA 17401  
717-852-9675  
[www.yorkpa.org](http://www.yorkpa.org)

★ Denotes Annual Sponsor



### BRP Entertainment ★

325 Lauder Milch Rd., Ste. 103  
Hershey, PA 17033  
717-761-7612  
www.brpentertainment.com  
B.R.P. Entertainment utilizes our 59-year expertise in the entertainment industry to provide exceptional entertainment & speaker talent in a manner that conveys our core values of Integrity, Excellence, Professionalism and Citizenship.



### Encore Global ★

325 University Dr.  
Hershey, PA 17033  
978-697-6870  
www.encoreglobal.com  
Avoid the complications of travel and coordinating schedules — take your event online. See if a hybrid event meets your needs. explore solutions with Encore today!



### J.P. Lilley & Son, Inc. ★

2009 N. 3rd St.  
Harrisburg, PA 17102  
717-238-8123  
www.jplilley.com  
JP Lilley is the regions established leader in audio, video, lighting and control technologies. A passion for results is at the core of everything we do.



### Klock Entertainment ★

1310 Crooked Hill Rd., Ste. 100  
Harrisburg, PA 17110  
717-836-7366  
www.klockentertainment.com  
Full-service event company including DJ Talent, Production, Event Design, Photo Booth Rental, and AV. We bring energy and passion to any special event, small or large.



**The PGH Commitment demonstrates how the Pittsburgh hospitality and tourism communities are aligned in prioritizing residents and visitors' health and wellbeing.**

**Consider booking Pittsburgh today!**

**Sara Holzer, CASE**  
**National Sales Director**  
sara.holzer@visitpittsburgh.com  
412-325-0273






CHESTER COUNTY'S  
BRANDYWINE VALLEY

## CHESTER COUNTY BOOKING BONUS

A **new** meeting or event booked in a Chester County lodging property with 25 or more room nights for **November 2020 – March 2021** will receive a **\$500** signing bonus.

For more information or to begin planning, contact:  
**Courtney Babcock**, Director of Sales  
 ☎ 484-840-7213 ✉ Courtney@brandywinevalley.com  
[www.BrandywineValley.com](http://www.BrandywineValley.com)

# DON'T WORRY.

WE'LL MAKE IT FIT.



Our kitting and fulfillment service makes us master of the perfect fit.

  
**graphtech**  
[thinkgraphtech.com](http://thinkgraphtech.com)



A **TRUSTED** AND SAFE  
DESTINATION, NOW  
AND **ALWAYS**.



Visit **PoconoMountains.com/PoconoPromise** for more information on how businesses are working together to ensure guests' safety. Interested in planning a meeting or convention? Email **sales@poconos.org** to learn more.



## 100,000 SQ. FT OF FLEXIBLE EVENT SPACE

Plenty of room to spread out!

(610) 768-3215 / [vfcasino.com](http://vfcasino.com)  
 1160 First Avenue, King of Prussia, PA

GAMBLING PROBLEM? CALL 1-800-GAMBLER  
 © 2020 BOYD GAMING CORPORATION®



**Camelback Resort**

193 Resort Dr.  
Tannersville, PA 18372  
570-517-7032  
[www.camelbackresort.com](http://www.camelbackresort.com)

**Days Inn by Wyndham Penn State**

240 S. Pugh St.  
State College, PA 16801  
814-238-8454  
[www.centrehotel.com](http://www.centrehotel.com)

**Doubletree by Hilton Pittsburgh GreenTree**

500 Mansfield Ave.  
Pittsburgh, PA 15205  
412-920-8097  
[www.guestreservations.com/doubletree-by-hilton-hotel-pittsburgh/](http://www.guestreservations.com/doubletree-by-hilton-hotel-pittsburgh/)

**Eden Resort & Suites**

222 Eden Rd.  
Lancaster, PA 17601  
717-560-8440  
[www.edenresort.com](http://www.edenresort.com)

**Embassy Suites by Hilton Pittsburgh Downtown**

535 Smithfield St.  
Pittsburgh, PA 15222  
412-338 2200  
[www.hilton.com/en/locations/usa/pennsylvania/pittsburgh/embassy/](http://www.hilton.com/en/locations/usa/pennsylvania/pittsburgh/embassy/)

**EVEN Hotel Downtown Pittsburgh**

425 Forbes Ave.  
Pittsburgh, PA 15219  
412-301-2277  
[www.evenhotels.com/pittsburghdwtn](http://www.evenhotels.com/pittsburghdwtn)  
3 meeting rooms available

**Frank J. Pasquerilla Conference Center**

301 Napoleon St.  
Johnstown, PA 15901  
814-535-9385  
[www.crownamerican.com](http://www.crownamerican.com)

**Gettysburg Hotel**

One Lincoln Square  
Gettysburg, PA 17325  
717-337-2000  
[www.gettysburghotel.com](http://www.gettysburghotel.com)

**Graduate State College**

125 South Atherton St.  
State College, PA 16801  
814-231-2100  
[www.graduatehotels.com](http://www.graduatehotels.com)

**Happy Valley Hotels**

1965 Waddle Rd.  
State College, PA 16803  
[www.happyvalleyvip.com](http://www.happyvalleyvip.com)

**Heritage Hills Golf Resort & Conference Center**

2700 Mt Rose Ave.  
York, PA 17402  
717-755-0123  
[www.heritagehillsresort.com](http://www.heritagehillsresort.com)



**Hershey Resorts ★**

325 University Dr.  
Hershey, PA 17033  
717-534-8600  
[www.hersheypa.com](http://www.hersheypa.com)  
Conveniently located in Central Pennsylvania, *The Hotel Hershey®* and *Hershey Lodge<sup>SM</sup>* present more than 125,000 sq ft of flexible meeting space, and plenty of chocolate.

**Hersheypark**

108 Chocolate World Way  
Hershey, PA 17033  
717-520-5789  
[www.hersheypa.com](http://www.hersheypa.com)



## HILTON HARRISBURG HEART OF THE CITY



Featuring 341 upscale guest rooms, over 38,000 square feet of flexible meeting space and located in the heart of downtown, Hilton Harrisburg is the ideal choice for your next meeting.



One North Second Street | Harrisburg, PA 17101  
717-233-6000 | [www.harrisburg.hilton.com](http://www.harrisburg.hilton.com)



## EXPLORE THE POSSIBILITIES

Where big city culture can be  
savored at a small town pace.

25 S. QUEEN STREET  
LANCASTER, PA 17603-3918

[LancasterConventionCenter.com](http://LancasterConventionCenter.com)



LANCASTER  
COUNTY  
CONVENTION  
CENTER

**Christine Stuart**

DIRECTOR OF GROUP SALES

[CHRISTINE.STUART@INTERSTATEHOTELS.COM](mailto:CHRISTINE.STUART@INTERSTATEHOTELS.COM)

PHONE (717) 207-4048 MOBILE (717) 598-4278



### Sheraton Harrisburg Hershey Boardroom to Formal Gala

We can bring any gathering to life in our versatile venues. Impress party guests with delicious catered meals, crafted in-house from fresh, local ingredients perfect for any occasion



4650 Lindle Road,  
Harrisburg, PA 17111  
717-564-5511

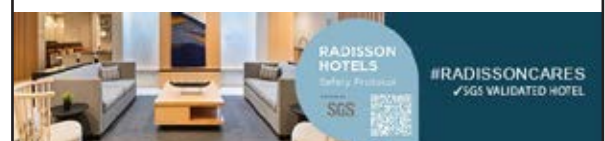


*Radisson provides the perfect space for  
ALL events.*

*Our 30,000 SqFt of flexible, modern and  
newly renovated meeting space is the  
perfect setting, making your event*

**SIMPLY DELIGHTFUL**

CALL OUR SALES TEAM TODAY!  
717-433-9737  
1150 Camp Hill Bypass  
Camp Hill, PA 17011



### High Hotels at Rossmoyne

5001 Ritter Rd.  
Mechanicsburg, PA 17055  
717-590-1153  
[www.highhotels.com](http://www.highhotels.com)

### Hilton Garden Inn Pittsburgh Southpointe

1000 Corporate Dr.  
Canonsburg, PA 15317  
724-743-5000  
[www.hilton.com](http://www.hilton.com)



### Hilton Harrisburg ★

One N. Second St.  
Harrisburg, PA 17101  
717-237-6408  
[www.hilton.com](http://www.hilton.com)  
Conveniently located in historic downtown Harrisburg, tradition combines with trends to make Hilton Harrisburg the ideal choice to host your next meeting or convention.

### Hilton Scranton Hotel & Conference Center

100 Adams Ave.  
Scranton, PA 18503  
570-343-3000  
[www.hilton.com](http://www.hilton.com)

### Historic Hotels

30 Southwind Dr.  
Honey Brook, PA 19344  
717-556-8713  
[www.historichotels.org](http://www.historichotels.org)

### Holiday Inn Harrisburg East

815 S Eisenhower Blvd.  
Middletown, PA 17057  
717-939-1600  
[www.ihg.com/holidayinn/hotels/us/en/middletown/mdtmt/hoteldetail](http://www.ihg.com/holidayinn/hotels/us/en/middletown/mdtmt/hoteldetail)

### Holiday Inn Harrisburg/Hershey

604 Station Rd.  
Grantville, PA 17028  
717-469-1554  
[www.stayholiday.com](http://www.stayholiday.com)  
13 meeting rooms + outdoor events + parking available

### Holiday Inn Lancaster

26 East Chestnut St.  
Lancaster, PA 17602  
717-394-0900  
[www.ihg.com](http://www.ihg.com)

### Hollywood Casino at Penn National Race Course

777 Hollywood Blvd.  
Grantville, PA 17028  
717-469-3466  
[www.hollywoodpnrc.com](http://www.hollywoodpnrc.com)

### Hyatt Regency Pittsburgh

1111 Airport Blvd., Box 12420  
Pittsburgh, PA 15231  
[www.marriott.com](http://www.marriott.com)

### Kalahari Resorts and Conventions ★



PO Box 590  
1305 Kalahari Dr.  
Wisconsin Dells, WI 53965  
608-254-5466  
[www.kalahariresorts.com](http://www.kalahariresorts.com)  
200,000 sq ft of brand new customizable meeting space, 977 guest rooms, premium dining, spa, America's best and largest in family-friendly amenities, and more — all under one roof. Kalahari is THE place to hold your next conference!





**Lancaster County Convention Center & Lancaster Marriott at Penn Square ★**

25 S. Queen St.  
Lancaster, PA 17603  
717-207-4088

interstatehinterstatehinterstateh.erstatehotels.com  
marriott.com/countyconventioncenter  
&lancaftermarriottatpennsquare  
Named a "Top 10 U.S. City to Visit" by Forbes, the Lancaster Marriott is central to downtown Lancaster and beautifully integrated with a world-class convention center, the Lancaster County Convention Center, and offers a prime location within walking distance to full-time entertainment and trendy dining.

**Lehigh Valley Hotel & Conference Center, SureStay Collection by Best Western**

300 Gateway Dr.  
Bethlehem, PA 18017  
www.lehighvalleyhotel.com

**Mount Hope Estate & Winery**

2775 Lebanon Rd  
Manheim, PA 17545  
717-537-8377  
www.parenfaire.com



**Omni Bedford Springs Resort ★**

2138 Business Route 200  
Bedford, PA 15522  
814-623-8100  
www.omnihotels.com/hotels/bedford-springs  
Omni Bedford Springs Resort has been an important meeting place for nearly 200 years. Today, the resort hosts 216 luxurious guestrooms, the most up-to-date meeting facilities and was recognized as "2019 Top 10 Resorts in the Mid-Atlantic" by Conde Nast.

**Omni William Penn**

530 William Penn Place  
Pittsburgh, PA 15219-1820  
412-553-5226  
www.omni.com

**Penn State Hospitality Services**

215 Innovation Blvd.  
State College, PA 16803  
814-863-5016  
www.psu.edu

**Pittsburgh Marriott City Center**

112 Washington Place  
Pittsburgh, PA 15219-3423  
412-918-1319  
www.marriott.com/pitdt  
17 meeting rooms + private outdoor courtyard available



**Radisson Hotel Harrisburg ★**

1150 Camp Hill Bypass  
Camp Hill, PA 17011  
717-433-9737  
www.radisson.com/camphillPA  
Radisson provides the perfect space for ALL events. Our 30,000 SqFt of flexible meeting space is the perfect setting, making your event Simply Delightful.  
16 meeting rooms + outdoor space available

**Ramada Hotel and Conference Center**

1450 South Atherton St.  
State College, PA 16801  
814-321-9114  
www.ramadasc.com

**Scott Enterprises - Ambassador Center**

2225 Downs Dr.  
Erie, PA 16509  
814-868-9218  
www.visitscott.com



### Seven Springs Mountain Resort ★

777 Water Wheel Dr.  
Champion, PA 15622  
800-452-2223  
[www.seven.com/waterwheelPA](http://www.seven.com/waterwheelPA)  
Arrange your next meeting at Seven Springs Mountain Resort and let our 5,800 acres of indoor and outdoor meeting spaces inspire your team!

### Sheraton Bucks County Hotel

400 Oxford Valley Rd.  
Langhorne, PA 19047  
215-269-3413  
[www.sheratonbuckscounty.com](http://www.sheratonbuckscounty.com)  
12 meeting rooms available



SHERATON  
EST. 1937

### Sheraton Harrisburg Hershey Hotel ★

4650 Lindle Rd.  
Harrisburg, PA 17111  
717-564-5511  
[www.sheraton.com/lindlelindlePA](http://www.sheraton.com/lindlelindlePA)  
Your whole group will enjoy an unforgettable event, hosted in 14,656 sq ft of flexible space. Relax, work, and play at Sheraton Harrisburg Hershey.

### Sheraton Pittsburgh Hotel at Station Square

7 Station Square Dr.  
Pittsburgh, PA 15219  
412-261-2000  
[www.sheraton.com](http://www.sheraton.com)

### Skytop Lodge

One Skytop  
Skytop, PA 18357  
570-595-7401  
[www.skytoplodge.com](http://www.skytoplodge.com)

### Split Rock Resort

100 Moseywood Rd.  
Lake Harmony, PA 18624  
570-215-6123  
[www.splitrockhotel.com](http://www.splitrockhotel.com)

### Spooky Nook Meetings & Events / Warehouse Hotel at the Nook

2913 Spooky Nook Rd.  
Manheim, PA 17545  
717-618-8580  
[www.nooksports.com](http://www.nooksports.com)

### The Henderson Beach Resort & SPA

200 Henderson Resort Way  
Destin, FL 32541  
717-460-7275  
[www.hendersonbeachresort.com](http://www.hendersonbeachresort.com)  
7 meeting rooms - 10,000 sq ft + 20,000 sq ft of outdoor space available

### The National Civil War Museum

One Lincoln Circle At Reservoir Park  
Harrisburg, PA 17103  
717-260-9573  
[www.nationalcivilwarmuseum.org](http://www.nationalcivilwarmuseum.org)

### The Westin Pittsburgh

1000 Penn Ave.  
Pittsburgh, PA 15222  
412-560-6352  
[www.marriott.com](http://www.marriott.com)

### Toftrees Resort & Conference Center

One Country Club Lane  
State College, PA 16803  
814-234-8000  
[www.shanercorp.com](http://www.shanercorp.com)



### Valley Forge Casino Resort ★

1160 First Ave.  
King of Prussia, PA 19406  
610-354-8216  
[www.vfcasino.com](http://www.vfcasino.com)

With space to socially-distance your attendees, Valley Forge Casino Resort's expert planners deliver safe, productive, and successful events for all sizes.

32 meeting rooms + Valley Beach open seasonally

### Warwick Hotel Rittenhouse Square

220 S. 17th St.  
Philadelphia, PA 19103  
215-789-6102  
[www.warwickrittenhouse.com](http://www.warwickrittenhouse.com)

### Wind Creek Bethlehem

77 Sands Blvd.  
Bethlehem, PA 18015  
484-777-7928  
[www.windcreekbethlehem.com](http://www.windcreekbethlehem.com)

### Wyndham Garden York

2000 Loucks Rd.  
York, PA 17408  
717-846-9500  
[www.wgyorkpa.com](http://www.wgyorkpa.com)  
5 meeting rooms + private outdoor courtyard available

## Planning a Special Event or Conference?

Check out our Digital Edition at  
[www.eventsmagazine.com](http://www.eventsmagazine.com)



or call  
215-947-8600  
for **Free**  
Advice!



MID-ATLANTIC  
**EVENTS**  
M A G A Z I N E

## We Know Nonprofits

Through our customized services and integrated approach, our dedicated team of professionals can anticipate your needs and provide forward-thinking solutions.



We welcome the opportunity to meet with you to discuss how we can address your audit, tax, and accounting needs.

833-404-0344 | [bbender@srsnodgrass.com](mailto:bbender@srsnodgrass.com) | [srsnodgrass.com](http://srsnodgrass.com)



## BUSINESS MEMBERS

### ConferenceDirect

58 Carleton Dr.  
Pittsburgh, PA 15243  
412-443-1607  
[www.conferencedirect.com](http://www.conferencedirect.com)

### Boyer & Ritter LLC

211 House Ave.  
Camp Hill, PA 17011  
717-761-7210  
[www.cpabr.com](http://www.cpabr.com)

### Cheshire Law Group

5275 Germantown Ave.  
Philadelphia, PA 19144-2328  
267-331-4157  
[www.cheshirenonprofitlaw.com](http://www.cheshirenonprofitlaw.com)



### Graphtech ★

1310 Crooked Hill Rd., Ste. 800  
Harrisburg, PA 17110  
717-238-5751  
[www.thinkgraphtech.com](http://www.thinkgraphtech.com)  
Use our services to create a solution as unique as your needs. Creative services, print, signage, publication & sponsorship management, websites & online flipbooks, & promotional products.

## OTHER MEMBERS

### MARCO

2640 Commerce Dr.  
Harrisburg, PA 17110  
717-545-1060  
[www.marcopromos.com](http://www.marcopromos.com)

### McNees Wallace & Nurick

100 Pine St., PO Box 1166  
Harrisburg, PA 17108-1166  
717-237-5460  
[www.mcneeslaw.com](http://www.mcneeslaw.com)



### Mid-Atlantic Events Magazine ★

1800 Byberry Rd., Ste. 901  
Huntingdon Valley, PA 19006  
215-947-8600  
[www.eventsmagazine.com](http://www.eventsmagazine.com)  
We continue to connect planners with destinations and venues throughout the region as an eMagazine....This is all part of our ROI - or - Return On Relationships.

### RC Kelly Law Associates, LLC

623 North Broad St.  
Lansdale, PA 19446  
215-896-3846  
[www.rckelly.com](http://www.rckelly.com)

**Do you want to be featured in the next Buyer's Guide?  
Are you interested in becoming an annual sponsor?**



**Contact Alexis Kierce with Graphtech at 717-238-5751 x119  
or [alexis@thinkgraphtech.com](mailto:alexis@thinkgraphtech.com) to learn more.**



**S.R. Snodgrass, P.C. ★**

2009 Mackenzie Way, Ste. 340  
Cranberry Township, PA 16066  
724-934-0344

[www.srsnodgrass.com](http://www.srsnodgrass.com)

We provide audit, tax, and accounting services to trade associations and membership organizations, with the goal of contributing to their ability to accomplish their missions.

**The Carlisle Group**

200 Technology Dr., Ste. 201  
Mechanicsburg, PA 17050  
717-827-4403  
[www.tcgrecruit.com](http://www.tcgrecruit.com)

**Triad Strategies**

300 N. 2nd St., 12th Floor  
Harrisburg, PA 17101  
(717) 238-2970  
[www.triadstrategies.com](http://www.triadstrategies.com)  
5 meeting rooms + rooftop patio available

**Sand Associates**

3560 Green St.  
Harrisburg, PA 17110  
717-238-5558  
[www.sandassociates.com](http://www.sandassociates.com)

**Service, Education & Consulting, Inc.**

623 N. Broad St.  
Lansdale, PA 19446  
[www.yellowbuses.org](http://www.yellowbuses.org)



Want to further your connections and relationships with PASAE's association community? Check out our calendar of events and join us.

# MEET HERE.

Arrange your next meeting at Seven Springs Mountain Resort and let our 5,800 acres of indoor and outdoor meeting spaces inspire your team!

# PLAY HERE.

Complete Meeting Packages Available!

## WELCOME TO OUR BOARDROOM

For more information on hosting your event, please contact one of our Sales Professionals at 800-452-2223, ext. 7975

[7springs.com](http://7springs.com)



**PENNSYLVANIA'S**  
★ **OUTDOOR ADVENTURE HQ** ★  
YOUR HEADQUARTERS FOR OUTDOOR FUN

**MEET YOUR  
NEXT ADVENTURE IN**

# HAPPY VALLEY

In Happy Valley, excitement waits just outside your meeting room door. With thrilling attractions, delightful towns, and every outdoor adventure imaginable, there's no better place to bring your team together or take them out on the town.

HAPPY VALLEY  
ADVENTURE #  
**57**

THE  
**HAPPY VALLEY**  
ADVENTURE BUREAU

PLAN YOUR NEXT EVENT AT  
**[HAPPYVALLEY.COM/SUCCESS](http://HAPPYVALLEY.COM/SUCCESS)**





**Lighting. Set Design. Audio. Video.**

We pride ourselves in executing your vision from beginning to end, every time.

717.836.7366 | [events@klockentertainment.com](mailto:events@klockentertainment.com)

